

**UNITED STATES PUBLIC LAND SURVEY CORNER CERTIFICATE FOR**

Land survey monuments situated in Section 10, Township 106 North, Range 43 West, of the Fifth Principal Meridian, Murray County, Minnesota..

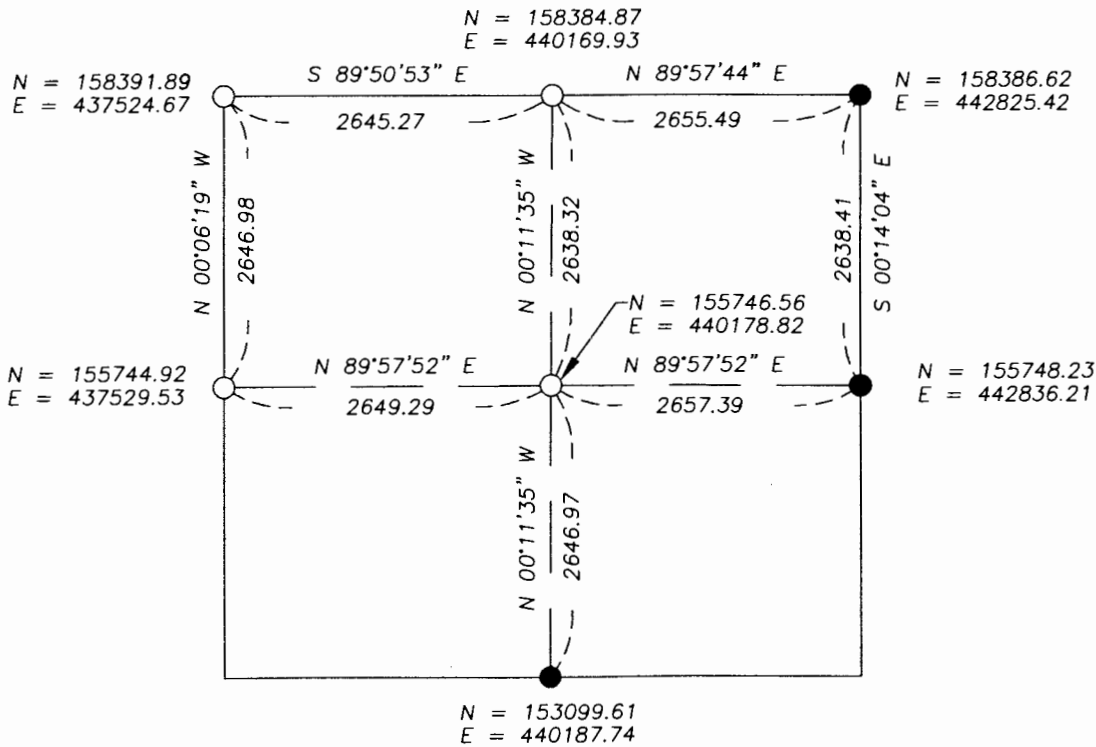
Previously recorded in N/A in County Recorder's Office.

(Show reason for preparing this certificate, the evidence and detailed procedure used in establishing the corner position & monumentation found or placed.)

MONUMENT DESCRIPTION AND REMARKS: On Nov. 20, 2006 we dug with a backhoe for W 1/4 Cor. and found a 9" X 9" stone 8" deep with high point & accepted as corner. Set survey marker over top center of stone. At NW Cor. of Sec. there is a large box culvert crossing diagonally so didn't dig for corner. Set survey marker at center of intersection for accepted corner and occupation line. Searched with backhoe for N 1/4 Cor. and did not find. Set 1" Iron Pipe with survey cap 23008 at center of Twp. Rd. in line with fence & occupation lines north & south as accepted location. At center of Sec. set 1" Iron Pipe with survey cap 23008 at intersection of opposite 1/4 corners as per PLS Instructions.

MURRAY COUNTY COORDINATES

**PLAN-VIEW**



I hereby certify that this land surveying document was prepared and related survey work was performed by me or under my direct supervision and that I am a duly licensed Land Surveyor under the laws of the State of Minnesota.

*Perry L. Zieske* 12-19-06  
 Signature Date

Perry Zieske  
 License number 23008

Sheet 1 of 1

Corners to be Indexed

Corners	Section	Township	Range
NW	10	106	43
W 1/4	10	106	43
N 1/4	10	106	43
CTR.	10	106	43